

# LM

feel the  
difference



*LM-Arte by Style Italiano*

*Designed by Walter Devoto DDS  
& Angelo Putignano MD, DDS.*

*Style Italiano is a study group of  
passionate clinicians and researchers  
specialized in aesthetic restorative  
dentistry. More information at  
[www.styleitaliano.org](http://www.styleitaliano.org) and  
[www.facebook.com/styleitaliano](http://www.facebook.com/styleitaliano).*

LM-Arte Applica LM 46-49 XSi



LM-Arte Condensa LM 488-489 XSi



LM-Arte Fissura LM 481-487 XSi



LM-Arte Misura LM 496-497 XSi



LM-Arte Eccesso LM 307-308 XSi



*LM-Arte instruments are sold individually and also as a set.*

### LM-Instruments Oy

PL 88 (Norrbyn rantatie 8)  
FI-21601 Parainen  
Tel. +358 2 4546 400  
Fax +358 2 4546 444  
[info@lminstruments.com](mailto:info@lminstruments.com)  
[www.lminstruments.com](http://www.lminstruments.com)

Contact your local dealer!

0412/eng

# LMArte



# LM

feel the  
difference



Sculpt masterpieces

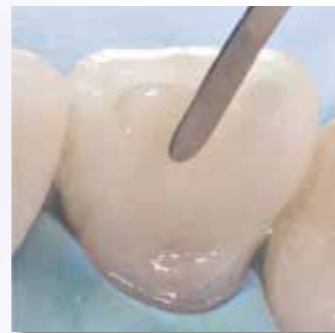
LM-Arte Set LM 6840 XSi



# LMArte

## Aesthetic layering - Succeed with LM-Arte

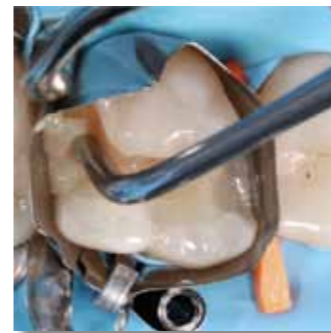
LM-Arte is a set of innovative instruments for aesthetic restorations. Instruments have been developed in co-operation with Style Italiano, a group of dentists specialized in aesthetic dentistry. LM-Arte instruments are especially designed for composite layering. They are made of high-quality and non-stick LM-DuraGradeMax – supersteel with exceptional polish. Each LM-Arte instrument is colour-coded and named by its main function which enables easy, efficient and quick restorative treatments.



### LM-Arte Applica

*Apply elastically*

A very thin and flexible spatula is designed for transporting and aesthetic modeling the composite. The flexible working end sculpts gently and precisely composite layers imitating the natural shapes of the tooth. The thin tip of the Applica enables the modeling in narrow spaces or against the matrix band.



### LM-Arte Condensa

*Push softly*

A long and round plunger especially designed for modeling composite. The angulated shanks of the instrument enable unlimited access to all cavities. Condensa has both a thick and a thin tip which may be used in cavities of different sizes, in both anterior and posterior areas. The rounded working end enables a delicate condensation of composite without any risk of sticking.



### LM-Arte Fissura

*Sculp delicately*

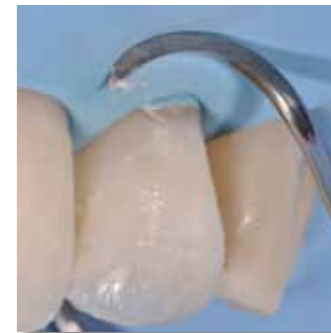
A modeling instrument with extremely sharp pointed tips. The conical tip is perfect for sculpting, with only one instrument, the anatomy of occlusal area of the posterior teeth. The fine, probe shaped tip is optimal for modeling fissures and mamelons as well as for layering characterization composites and sealants. The flexibility of the Fissura enables the gentle probing possible excess bonding resins on the tooth surfaces.



### LM-Arte Misura

*Measure precisely*

A unique instrument for horizontal and vertical measuring of thicknesses of composite layers on the anterior restorations. After the layering but before the polymerization of the dentine composite, the thinner, conical shaped tip is placed on the natural tooth enamel. This way the unpolymerized composite remaining under the conical tip will be gently modeled, leaving an optimal space (from 0,5 to 0,7 mm) for enamel composite layer. The thicker, short tip of the Misura is placed horizontally on the margin of the prepared cavity so that the edge of the tip remains on the original enamel. This determines the right amount of transparent composite to apply on the finishing line. As a result, the final aesthetic restoration consists of correctly calibrated opaque and translucent composites, preventing the unpleasant grey effect of the composites.



### LM-Arte Eccesso

*Finish neatly*

An instrument designed for the removal of composite and bonding residue. The special angulated working ends of the Eccesso are ideal for excess removal from cervical anterior and interproximal molar areas. This fine but solid instrument is characterized by an optimized length, thickness and width of the blade.

For more details and clinical information please visit [www.lminstruments.com](http://www.lminstruments.com) (English, français, Deutsch, español, italiano, svenska, suomeksi).