

# LMArte

LM

feel the  
difference



STYLE ITALIANO  
SHADE GUIDES

Sculpt masterpieces

# LMArte



## Esthetic layering - succeed with LMArte

LMArte is a set of innovative instruments for esthetic restorations and designed especially for composite layering. Each instrument is color-coded and named by its main function to enable easy, efficient and quick restorative treatments.

LMArte instruments have been developed in co-operation with Style Italiano, a study group of passionate clinicians and researchers specialized in esthetic restorative dentistry.

Instruments are made of high-quality LM-DuraGradeMax supersteel with exceptional polish.

### **LMArte** by Style Italiano

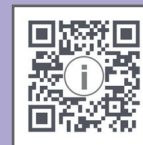
Designed by Walter Devoto DDS  
and Angelo Putignano MD, DDS.



Style Italiano is a study group of passionate clinicians and researchers specialized in esthetic restorative dentistry. For more information scan the QR codes to visit Style Italiano website and to find them on Facebook.



For more details with  
clinical videos scan  
the QR code and visit  
[www.lm-dental.com/  
LM-Arte](http://www.lm-dental.com/LM-Arte)





LM-Arte Applica

<b>LMErgoSense</b>	LM 46-49 ES
<b>LMErgoMax</b>	LM 46-49 XSI



LM-Arte Fissura

<b>LMErgoSense</b>	LM 481-487 ES
<b>LMErgoMax</b>	LM 481-487 XSI



LM-Arte Applica Twist

<b>LMErgoSense</b>	LM 464-494 ES
<b>LMErgoMax</b>	LM 464-494 XSI



LM-Arte Eccesso

<b>LMErgoSense</b>	LM 307-308 ES
<b>LMErgoMax</b>	LM 307-308 XSI



LM-Arte Modella

<b>LMErgoSense</b>	LM 442-443 ES
<b>LMErgoMax</b>	LM 442-443 XSI



LM-Arte Condensa

<b>LMErgoSense</b>	LM 488-489 ES
<b>LMErgoMax</b>	LM 488-489 XSI



LM-Arte Misura

<b>LMErgoSense</b>	LM 496-497 ES
<b>LMErgoMax</b>	LM 496-497 XSI



LM-Arte Posterior Misura

<b>LMErgoSense</b>	LM 498-499 ES
<b>LMErgoMax</b>	LM 498-499 XSI

## Handle options:

**LMErgoSense**



The larger diameter and design provide sensational grip that has been proven to be ergonomic and efficient in scientific clinical testing. Uniquely intelligent handle with the option for RFID tagging - see more on [www.dentaltracking.com](http://www.dentaltracking.com). Ø 13.7 mm

**LMErgoMax**



Classic ergonomic design that functions well in all clinical procedures and guarantees excellent tactile sensitivity. Ø 11.5 mm

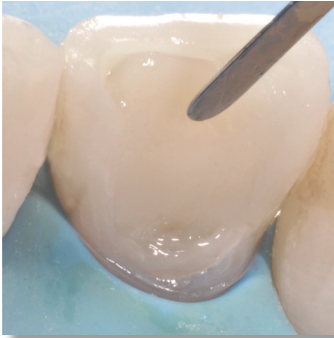
## LM-Arte Set

Incl. LM-Arte Applica, LM-Arte Condensa, LM-Arte Fissura, LM-Arte Misura and LM-Arte Eccesso in LM-Servo 5 cassette.

<b>LMErgoSense</b>	LM 6840 ES
--------------------	------------

<b>LMErgoMax</b>	LM 6840 XSI
------------------	-------------





## Apply elastically

*LM-Arte Applica*

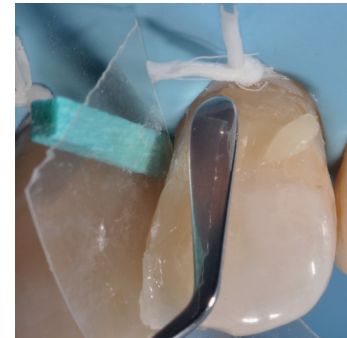
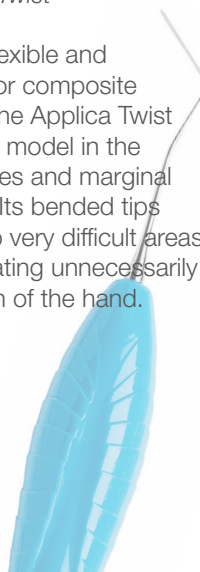
A very thin and flexible spatula is designed for transporting and esthetic modeling the composite. The flexible working end sculpts gently and precisely composite layers imitating the natural shapes of the tooth. The thin tip of the Applica enables the modeling in narrow spaces or against the matrix band.



## Apply with a twist

*LM-Arte Applica Twist*

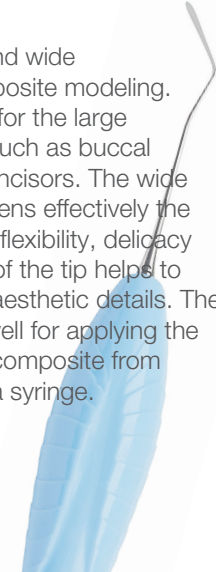
Especially fine, flexible and narrow spatula for composite modeling. With the Applica Twist it is very easy to model in the approximal spaces and marginal ridges in matrix. Its bended tips allow reaching to very difficult areas without complicating unnecessarily the work position of the hand.

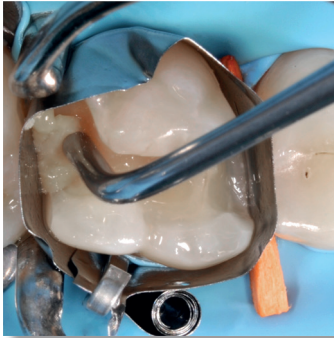


## Model flexibly

*LM-Arte Modella*

Especially fine and wide spatula for composite modeling. Suits especially for the large tooth surfaces such as buccal surfaces of the incisors. The wide spatula end flattens effectively the composite. The flexibility, delicacy and sharpness of the tip helps to create precise, aesthetic details. The spatula works well for applying the composite from a syringe.

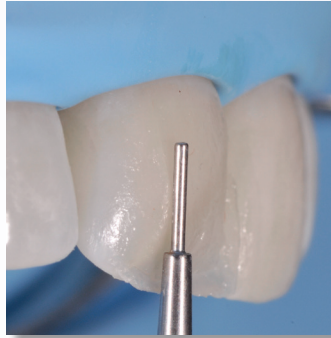




## Push softly

*LM-Arte Condensa*

A long and round plugger designed especially for modeling of a composite. The angulated shanks of the instrument enable unlimited access to all cavities. Condensa has both a thick and a thin tip which may be used in cavities of different sizes, in both anterior and posterior areas. The rounded working end enables a delicate condensation of composite without any risk of sticking.



## Measure precisely

*LM-Arte Misura*

A unique instrument for horizontal and vertical measuring of thicknesses of composite layers on the anterior restorations. After the layering but before the polymerization of the dentine composite, the thinner, conical shaped tip is placed on the natural tooth enamel. This way the unpolymerized composite remaining under the conical tip will be gently modeled, leaving an optimal space for enamel composite layer. The thicker, short tip of the Misura is placed horizontally on the margin of the prepared cavity so that the edge of the tip remains on the original enamel. This determines the right amount of transparent composite to apply on the finishing line. As a result, the final esthetic restoration consists of correctly calibrated opaque and translucent composites, preventing the unpleasant grey effect of the composites.





NEW!



## Measure & model handy

*LM-Arte Posterior Misura*

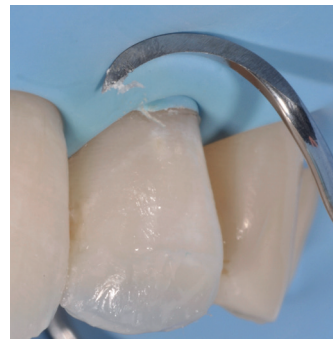
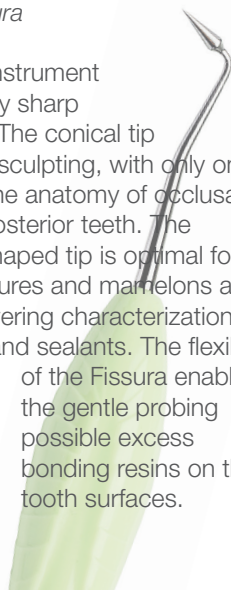
Posterior version of the popular Misura instrument. Designed for horizontal and vertical measuring of thickness of composite layers on posterior restorations. The fork shaped tip of the instrument allows measuring and modeling of the composite wall with the presence of a matrix.



## Sculp delicately

*LM-Arte Fissura*

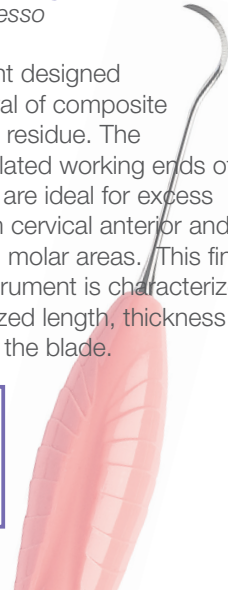
A modeling instrument with extremely sharp pointed tips. The conical tip is perfect for sculpting, with only one instrument, the anatomy of occlusal area of the posterior teeth. The fine, probe shaped tip is optimal for modeling fissures and mamelons as well as for layering characterization composites and sealants. The flexibility of the Fissura enables the gentle probing possible excess bonding resins on the tooth surfaces.



## Finish neatly

*LM-Arte Eccesso*

An instrument designed for the removal of composite and bonding residue. The special angulated working ends of the Eccesso are ideal for excess removal from cervical anterior and interproximal molar areas. This fine but solid instrument is characterized by an optimized length, thickness and width of the blade.



# Overcome the gingival retracting challenge with LM-Gengiva

The aim in restorative treatment of a cervical lesion is to achieve a perfect margin sealing, a strong bonding and an optimal polishing for the composite material. Mechanical gingival retraction in cervical restorations can be traumatic if not done properly.

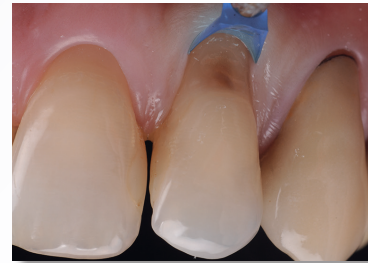
LM-Gengiva instrument with the gingival retractors is used to avoid injuring the gingiva unnecessarily and obtain the best clinical result. With this method the desired end result is achieved: the soft tissue is not harmed and the esthetic requirements are fulfilled.

LM-Gengiva  
gingival retracting kit

**LM**ErgoSense LM 7556K ES

**LM**ErgoMax LM 7556K XSI

Incl. LM-Gengiva hand instrument, blue gingival retractors (assortment of ca 90 pcs, 30 pcs/size) and LM-MultiLever for the removal of plastic working ends



## Gingival retractors

- retract the gingiva from the restoration
- hardness of the plastic tip allows a strong retraction
- the plastic tips allow certain flexibility for more adaptation while pressured
- the tip acts as a tight seal between the gingiva and tooth
- protects the gingiva and diminishes the debonding failures
- the bonding interface and the gingival margin can be seen perfectly; perfect contrast with soft tissues
- possible to customise with bur in order to fit a convex or concave root detect
- no bonding of the adhesive materials to the tips surface
- no interference with polymerization
- disposable

# LM Dental

LM-Instruments Oy

Norrbyn rantatie 8 | FI-21600 Parainen | Finland

Tel. +358 2 4546 400

[info@lm-dental.com](mailto:info@lm-dental.com) | [www.lm-dental.com](http://www.lm-dental.com)

Contact your local distributor!